

15_21 Runtime Errors

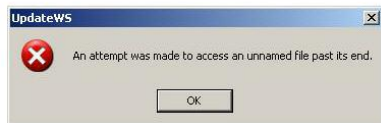
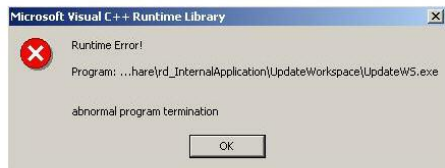
Question:

I've encountered several run-time errors while attempting to update my workspaces. What could be the cause and the fix for this?

Answer:

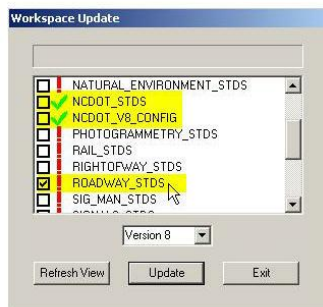
Possible causes:

- 1) Attempting to update SIG_MAN_STDS workspace.
- 2) Attempting to update TSU_STDS workspace.
- 3) Attempting to update TEMPLATE_STDS workspace.
- 4) Existing TEMPLATE_STDS is located on the *local drive*.*

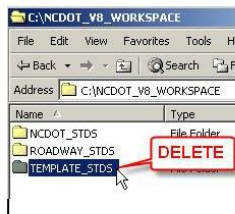


Currently there is a modified Workspace Update Program (UpdateWS.exe) that can fix most of these issues. However, it has always been RCS recommendation to update only these three workspaces.

- NCDOT_STDS
- NCDOT_V8_CONFIG
- ROADWAY_STDS



** There *should* be no reason why other NCDOT Unit's workspace is updated locally on a Roadway workstation or laptop. Updating other Unit's workspace and the template workspace will lead to potential workspace conflicts such as these. If these other workspaces already exist locally on your Roadway workstation, to fix the problem, simply delete *that* (Unit) whole folder from your local machine.



* For older and current workstations, the workspaces reside on the C:\ drive, e.g. C:\NCDOT_V8_WORKSPACE. For the newer workstations (HP XW 4400 and later), the workspaces reside on the D:\ drive, e.g. D:\NCDOT_V8_WORKSPACE.

** Hydraulics has not updated the HY_Payitems.ddb to place their hydraulic pay items such as pipes and structures since the NCDOT migration to Microstation V8 (February of 2005). The links to their database and workspace have been removed from Roadway workspace.